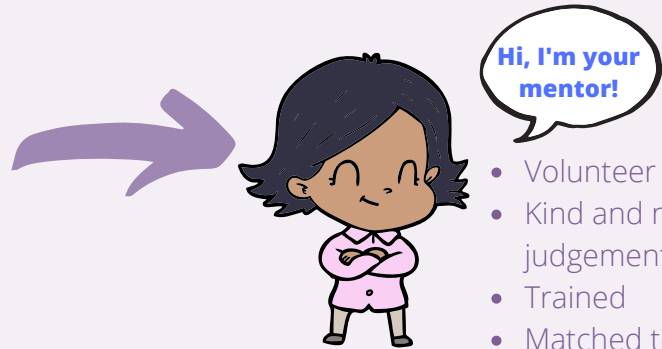


## WHAT IS A MENTOR?

A mentor is a guide, a role model, a friend you can trust. They will support and guide you with encouragement wherever you might need it.



- Volunteer
- Kind and non-judgemental
- Trained
- Matched to you

## IS THIS YOU?

- Aged 14 or older?
- Female?
- Living in NSW?
- Ready to make a change in your life?

## HOW DO I GET A MENTOR?



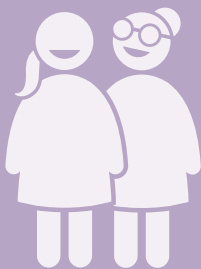
**Complete a referral form**  
You can get these from a WJN worker or on our website.



**Receive an 'intake' call from a WJN worker**  
She will ask you questions about your life situation



**Complete 'assessment' by a WJN worker**  
She'll ask more questions to help us understand your needs.




**A match will be made!**  
If mentoring is suitable for your needs, a WJN worker will match you and introduce you to your mentor.




**Mentoring relationship begins!**  
Expect a 1 on 1 relationship with your mentor, with non-judgemental support and guidance!



Questions?  
Need more info?  
Get in contact:

 [mentoring@wjn.net.au](mailto:mentoring@wjn.net.au)

 (02) 8011 0699

[womensjusticenetwork.org.au](http://womensjusticenetwork.org.au) 